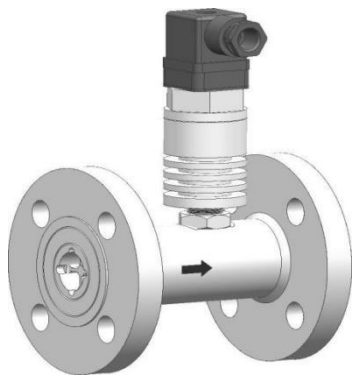


The principle characteristics

SN51 series turbine flow sensor is a kind of precision flow meter, suitable for measuring low viscosity media, such as water, diesel, gasoline, etc. It can be used to measure the flow and total amount of liquid with the corresponding flow integration meter housing. Widely used in petroleum, chemical engineering, metallurgy, scientific research and other fields of calculation, control system.

Sensors are common type, high precision type and wear-resistant type (hard alloy) and other forms. Amplifiers are available in both normal and flameproof types, and the sensor can also be used with field flow tables (lithium battery powered, with a one-year replacement battery).

This product implementation standard number is: ZB N12 005-19989



Parameter table

According to size DN (mm)	Flow range (m ³ /H)						nominal pressure PN (MPa)	Pressure loss of the largest (MPa)
	The lower limit	ceiling	The lower limit	ceiling	The lower limit	ceiling		
2					0.03	0.16	Screw compression: 6.3 Flange pressure: 1.6 Please indicate special pressure resistance	0.15
4					0.04	0.25		0.12
6					0.1	0.6		0.08
10					0.2	1.2		0.05
15			0.6	4	0.6	6		0.035
20					0.8	8		
25			1.6	10	1	10		
32					1.5	15		
40	3	20	3	20	2	20		0.025
50	6	40	6	40	4	40		
65					8	80		
80	16	100	16	100	10	100		
100	25	160	25	160	20	222		
125					25	250		
150	60	400	50	300	40	400		
200			100	600	80	800		
250			160	1000	120	1200		
300			260	1600	180	1800		

Dimensions.1 (threaded connection type)

Meter diameter (mm)	L (mm)	H (mm)				G (External thread)
		Pulse type	Explosion-proof pulse type	4-20mA Output type	Intelligent display type	
4	225	140	145	145	210	G1/2
6	225	140	145	145	210	G1/2
10	345	145	150	145	210	G1/2
15	75	145	150	150	215	G1
20	80	150	155	155	220	G1
25	100	155	160	160	225	G1 1/4
32	140	175	180	180	245	G2
40	140	180	185	180	250	G2
50	150	185	190	190	255	G2 1/2

Note: The above DN4–DN10 flow sensor contains the factory standard size of straight pipe segment, and DN15–DN50 caliber flow sensor does not contain the size of straight pipe segment

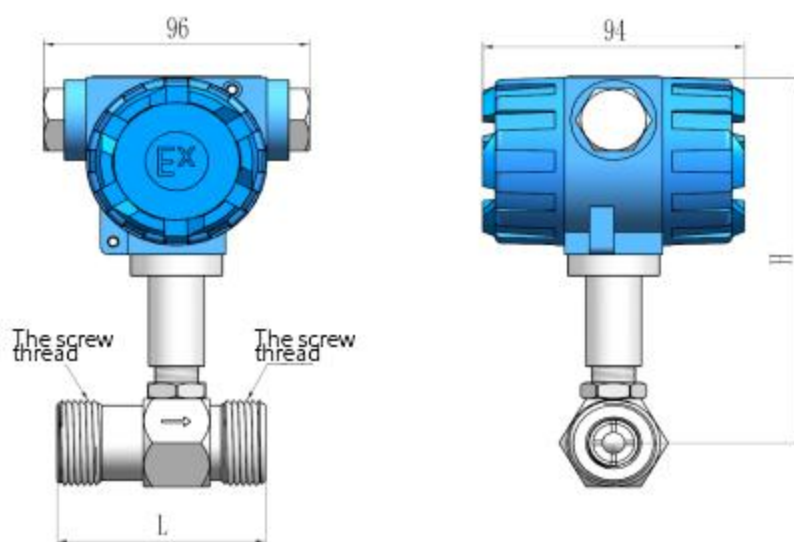
Dimensions.2 (flanged type)

Meter diameter (mm)	L (mm)	D (mm)	K (mm)	H (mm)				d (mm)	n (Number of holes)	The standard pressure
				Pulse type	explosion-proof Pulse type	4-20mA Output type	smart According to type			
15	75	95	65	175	180	180	245	14	4	2.5 MPa
20	80	105	75	185	190	190	255	14	4	
25	100	115	85	200	195	195	260	14	4	
32	140	140	100	210	215	215	275	18	4	
40	140	150	110	195	220	220	285	18	4	
50	150	165	125	230	235	235	295	18	4	
65	170	185	145	255	260	260	325	18	4	1.6 MPa
80	200	200	160	260	265	265	330	18	8	
100	220	220	180	285	285	285	350	18	8	
125	250	250	210	310	315	315	380	18	8	
150	300	285	240	345	345	345	410	22	8	
200	350	340	295	395	400	400	465	22	12	

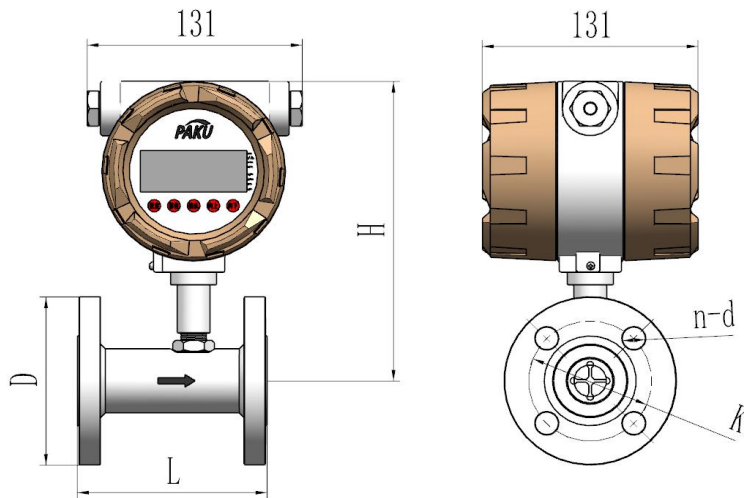
Dimensions.3 (Clamp connection type)

Meter diameter (mm)	L (mm)	D (mm)	H (mm)			
			Pulse type	Explosion-proof pulse type	4-20mA Output type	Intelligent display type
4	50	38	145			215
6	50	38	145			215
10	50	38	145			215
15	55	47	155			220
20	60	53	160			225
25	60	58	165			230
32	70	66	170			240
40	70	72	180			245
50	70	92	195			260
65	80	100	205			210
80	90	112	220	225	225	290
100	100	137	245	250	250	310
125	120	165	270	275	275	340
200	150	243	350	350	350	415

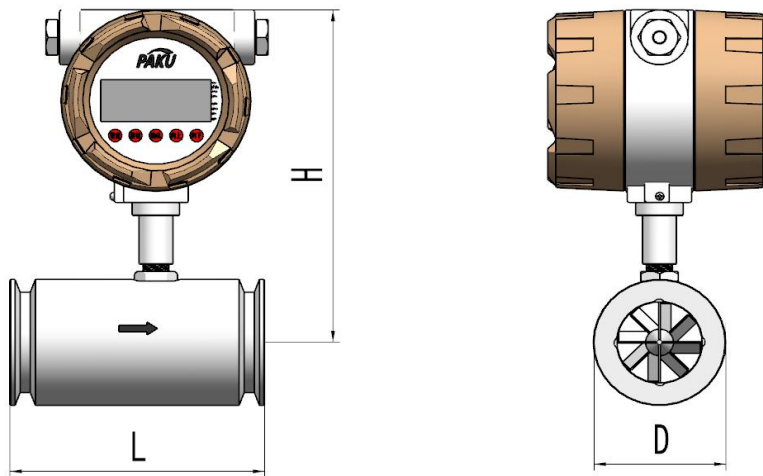
Dimensions.1 (threaded connection type)



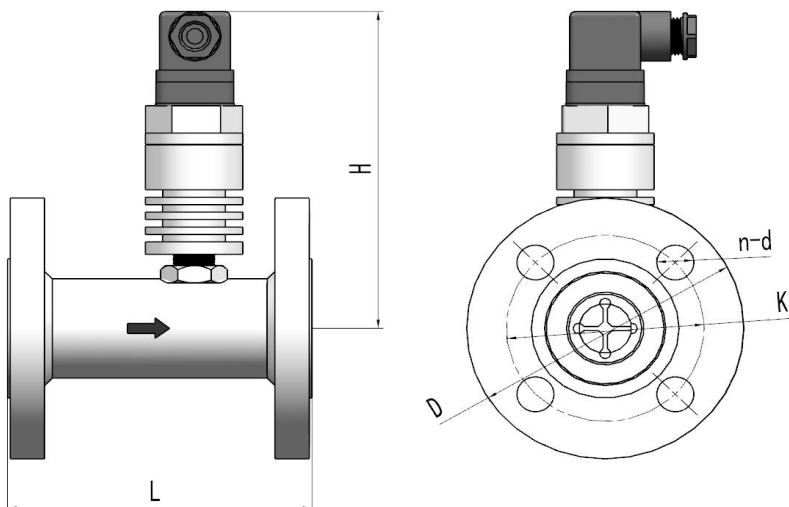
Dimensions.2 (flanged type)



Dimensions.3 (Clamp connection type)



Dimensions.4 (flanged type)



Selection table

SN51-	025	D	0	1	A	P1	A	D	detailed
SN51-									SN51 series turbine flow sensors
	025								Diameter option,025 represents DN25 pipe (for special pipe diameter, please consult sales engineer)
		A							Battery powered local display, no output
		B							Pulse signal output, no display
		C							Analog output 4–20mA, no display
		D							Local display, analog output 4–20mA
		E							Local display, analog output 0–10V
		F							Local display, analog output of 1–5V
		G							Local display, pulse signal output
			0						No communication or protocol
			1						RS485 communication
			2						HART protocol
				1					Sealed connection with internal thread (for \leq
				2					Flange connection (for \geq DN15 size)
				3					Sanitary grade clamp connection
				4					Quickly seal hose connectors
				5					Sealed connection with external thread (for \leq
					B				Accuracy 0.5% (for DN10 + size)
					C				Accuracy of 1.0%
						P1			Pressure: 16 bar
						P2			Pressure: 25 bar
						P3			Pressure: 40 bar
						P4			Pressure: 63 bar
						P5			Pressure: 160bar (diameter \leq DN50)
						P6			Voltage: 250bar (diameter \leq DN50)
						P7			Withstand pressure: 320bar (diameter \leq DN50)
						P8			Pressure: 400bar (diameter \leq DN50)
							A		A: Explosion proof A1: non-explosion proof
							B		Code breaking converter (optional)
							C		Smart Converter (optional)
								D	24V
								A	220V
								C	Battery powered (only for no output)

* When ordering, please indicate the medium flow direction, medium type, pipe diameter and expected measurement interval value. We can help you complete the exact test before leaving the factory.

* For viscous media, please indicate viscosity, temperature, type of media, and flow range.

* The selection table is only for parameter selection, and the corresponding codes of parameters are delivered.