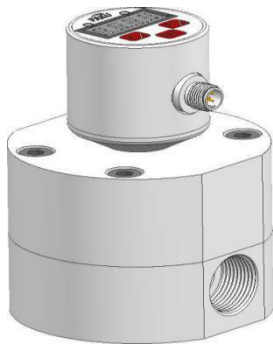
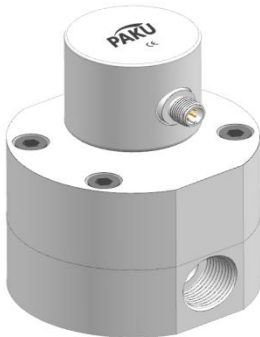


On the display



no display



wiring diagram

stitch	cable	signal
1	brown	power supply
2	white	Switch 2
3	blue	GND
4	black	开关1
5	gray	mA/Pulse P

principle and characteristics

SN54 series micro gear flow sensor with built-in double elliptical gear operation, through the high precision gear volume calculation medium volume, to achieve micro fluid medium measurement. Analog output switch output can be customized arbitrary Settings.

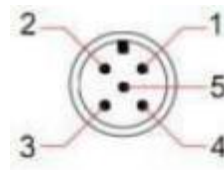
- ◆ analog switch double output
- ◆ PNP/NPN arbitrary switch
- ◆ LCD liquid crystal display
- ◆ High precision monitoring
- ◆ Precise quantitative measurement
- ◆ medium wide application range
- ◆ is not affected by medium pulsation
- ◆ Stainless steel/aluminum shell is optional
- ◆ Digital signal control transmission

product application

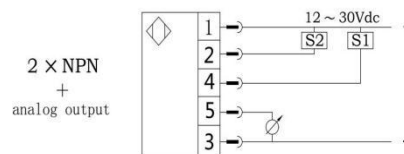
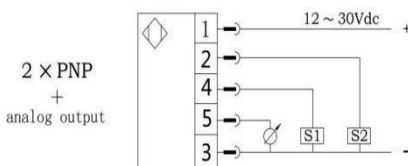
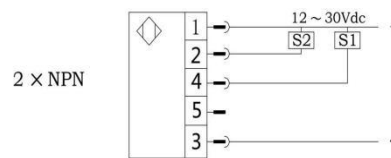
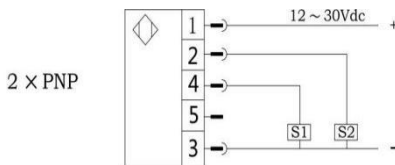
Widely used in various industries of low flow accurate measurement, suitable medium: adding agent fuel, water treatment of flotation tank, corrosion inhibitors, catalysts, emulsifiers, oil, grease, spices, adhesives, solvents, ink and pesticides and other parts of the high viscosity medium. Application industries include automobile, aviation, mining, electric power, chemical, pharmaceutical, food, coating, petroleum, environmental protection, printing and other industries.

technical specification

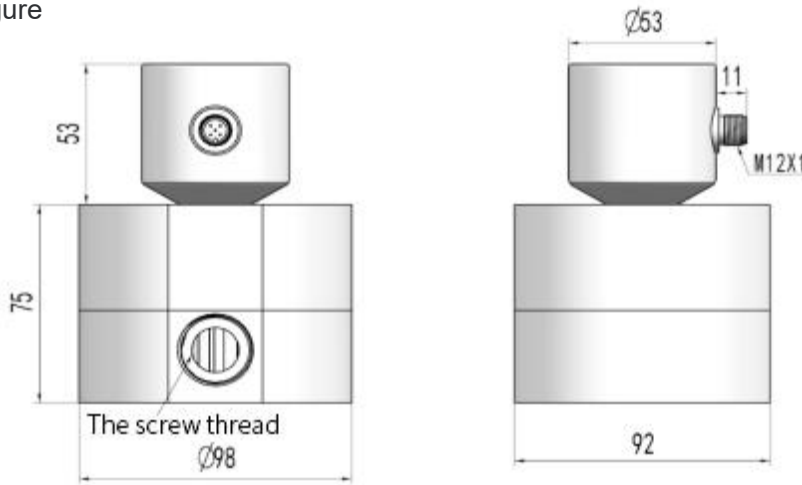
- ◆ Measuring range: see the type selection table
- ◆ Output signal: 4-20mA, pulse
- ◆ measurement accuracy: 0.5% FS
- ◆ power supply: 24Vdc
- ◆ medium temperature: -30... 80°C (high temperature custom: 150°C)
- ◆ Standard voltage: 5MPa
- ◆ High pressure customization: 15MPa (stainless steel)



N12 connectors



dimension figure



Selection table

SN54-	D	1	X	B	Coefficient of the pulse ml/P	detailed
SN54-						SN54 series micro elliptical gear flow sensors
	D				0.5	Measuring range: 0.02--2L/min (corresponding: internal thread G1/8)
	E				2.5	Measuring range: 0.1--10L/min (corresponding: internal thread G1/4)
	F				8.5	Measuring range: 0.3--30L/min (corresponding: internal thread G1/2)
	F1				14.3	Measuring range: 0.6--60L/min (corresponding: internal thread G3/4)
	G				23	Measuring range: 1--100L/min (corresponding: internal thread G1)
	H					Special design
		1				2 switch quantity +1 analog quantity 4-20MA output, local display
		2				1 analog output, no display
			X			Stainless steel housing
			L			Aluminum shell
				B		The standard model
				T		High temperature custom
				P		High pressure custom

* Note: The pulse coefficient of the flowmeter is indicated on the flowmeter and is generally XX ml/pulse。

* The selection table is only for parameter selection, and the corresponding codes of parameters are delivered。