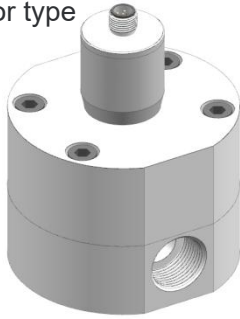
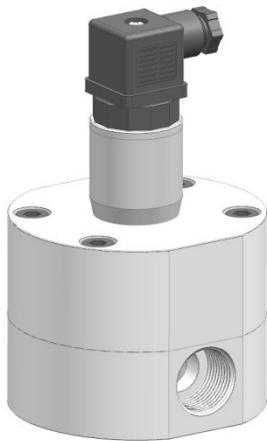


The connector type



Hersman type



Small type



principle and characteristics

The SN55A micro gear flow sensor has double elliptical gears, which drive the gear when the liquid flows into the gear flow meter to measure the cavity. Each tooth is equal to the volume of the liquid contained in the space formed by the measuring cavity wall. The volume of liquid flowing through can be measured by detecting the number of gears passing through a particular sensor.

SN55A gear flowmeters are not affected by medium viscosity and have high measurement accuracy and repeatability, even at the upper and lower limits of the range. Especially suitable for measuring high viscosity medium.

- ◆ analog switch double output
- ◆ PNP/NPN arbitrary switch
- ◆ High precision monitoring
- ◆ Accurate quantitative measurement
- ◆ medium wide application range
- ◆ Not affected by medium pulsation
- ◆ Stainless steel/aluminum shell is optional
- ◆ Digital signal control transmission

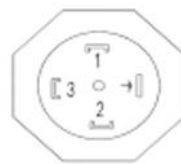
product application

Widely used in various industries of low flow accurate measurement, suitable medium: adding agent fuel, water treatment of flotation tank, corrosion inhibitors, catalysts, emulsifiers, oil, grease, spices, adhesives, solvents, ink and pesticides and other parts of the high viscosity medium. Application industries include automobile, aviation, mining, electric power, chemical, pharmaceutical, food, coating, petroleum, environmental protection, printing and other industries.

technical specification

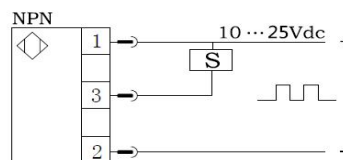
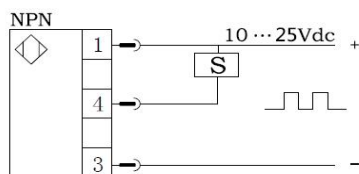
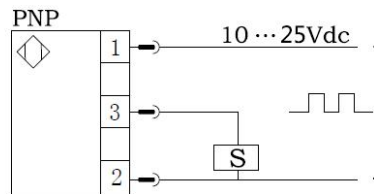
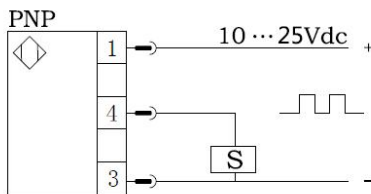
- ◆ Measuring range: see the type selection table
- ◆ Output signal: pulse
- ◆ measurement accuracy: 0.5% FS
- ◆ power supply: 24Vdc
- ◆ Medium temperature: -30... 80°C (high temperature custom: 150°C)
- ◆ Standard withstand voltage: 5MPa
- ◆ High pressure customization: 15MPa (stainless steel)

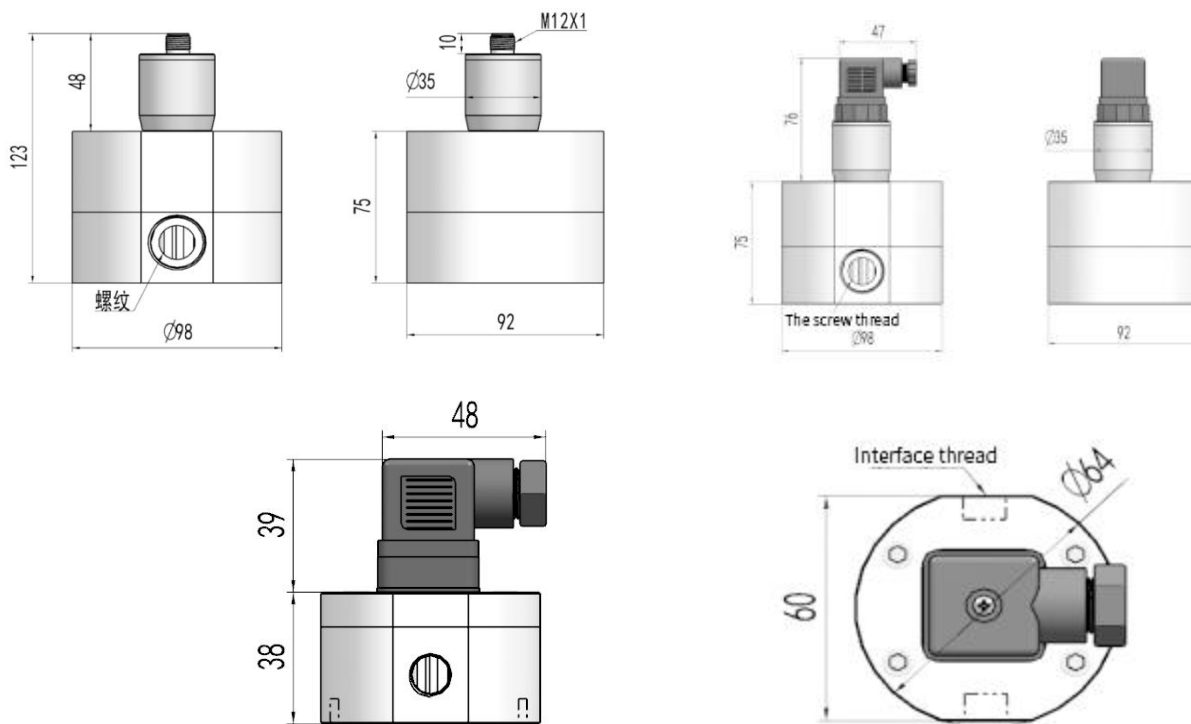
Wiring Diagram 2. (Hersman type)



signal	stitching
The power is	1
pulse	3
The power negative	2

Wiring Diagram 1. (M12 connector type)





Selection table

SN55A-	B	A	P	X	B	specification
SN55A-						SN55A series small elliptical gear flow sensor
	A					connector
	B					Hirschmann
	C					Small type
		A				Measuring range: 0.5--150ML/min (corresponding: thread G1/8)
		B				Measuring range: 3--300ML/min (corresponding: thread G1/8)
		C				Measuring range: 5--1000ML/min (corresponding: thread G1/8)
		D				Measuring range: 8--1600ML/min (corresponding: thread G1/4)
		E				Measuring range: 0.1--10L/min (corresponding: thread G1/4)
		F				Range: 0.3--30L/min (corresponding: thread G1/2)
		G				Measuring range: 0.5--100L/min (corresponding: thread G1)
		H				special designing (planning)
			P			PNPpulse output
			N			NPNpulse output
				X		stainless steel housing
				L		Aluminum shell
					B	Standard options
					T	High temperature custom
					P	High pressure custom

* The selection table is only available for parameter selection, and the corresponding code is delivered.